

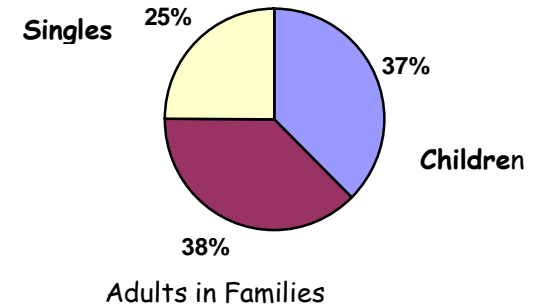


April 2008 Progress Report

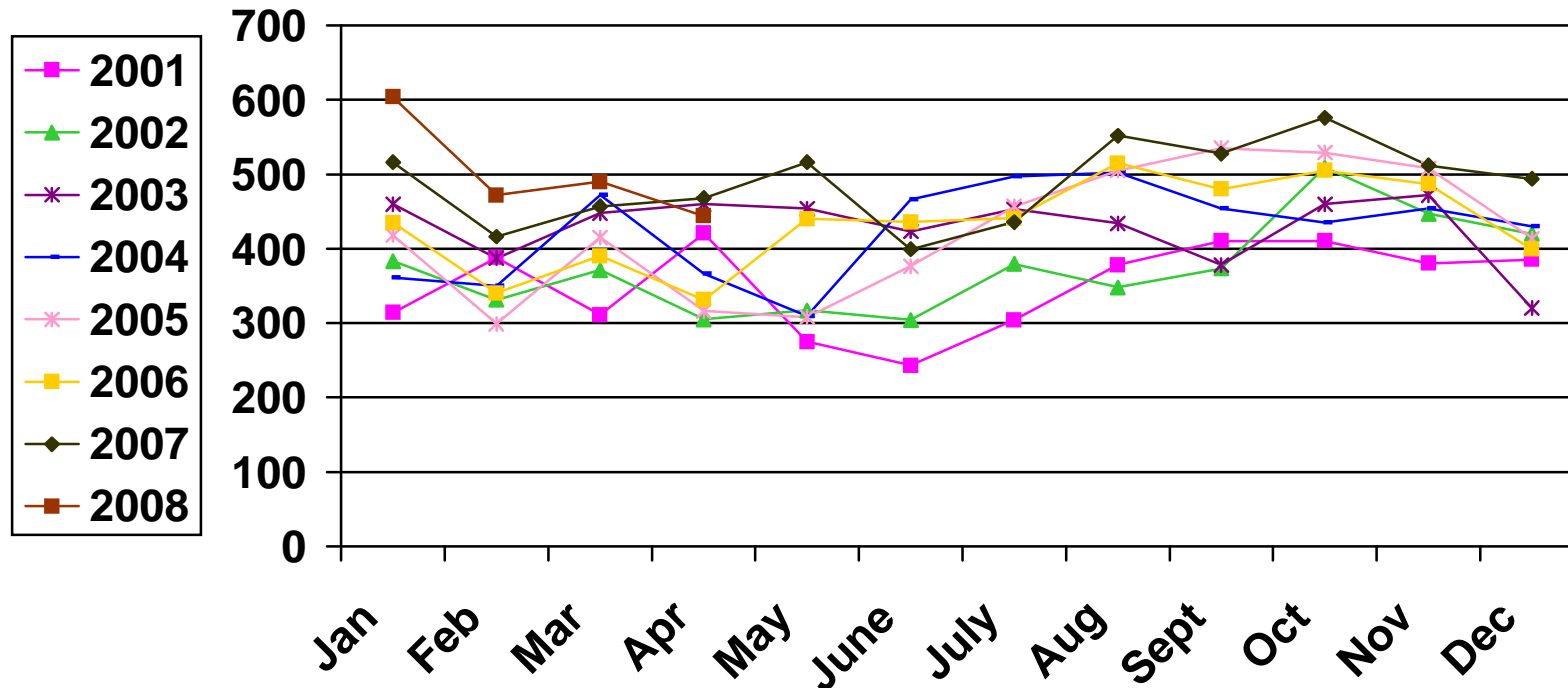
Total Clients Served by Emergency Shelter Clearinghouse

In the month of **April**, an **unduplicated** count shows that **444** children and adults were served by the Emergency Shelter Clearinghouse.

April 2008 # of clients served shown as children, adults in families, and singles.



Compared to last year, **April** data shows a **decrease** of **5%** of total clients served.



Please note: Numbers may fluctuate slightly from previous reports as we evaluate previous entries. This report represents the most up-to-date information.

Council for the Homeless 2500 Main Street, Vancouver, WA 98660 • info@icfth.com • www.icfth.com